

Fallimento COSTRUIRE s.r.l.

TRIBUNALE DI MILANO

Sezione Fallimentare – R.G. 791/2005

G.I. dott. SANTOLINI

CTU dott. ing. GIULIA MORTARA

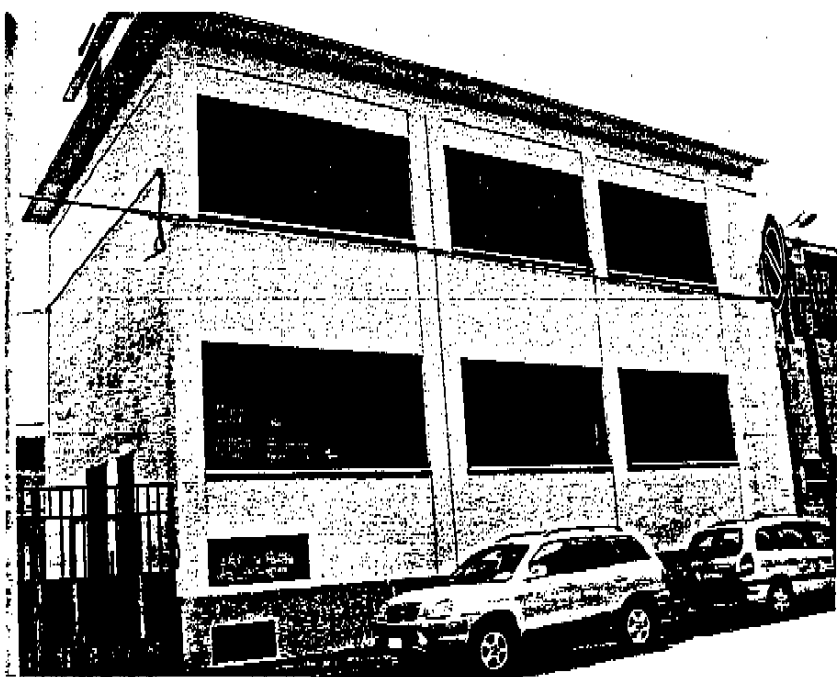
ALLEGATO 4

Documentazione fotografica



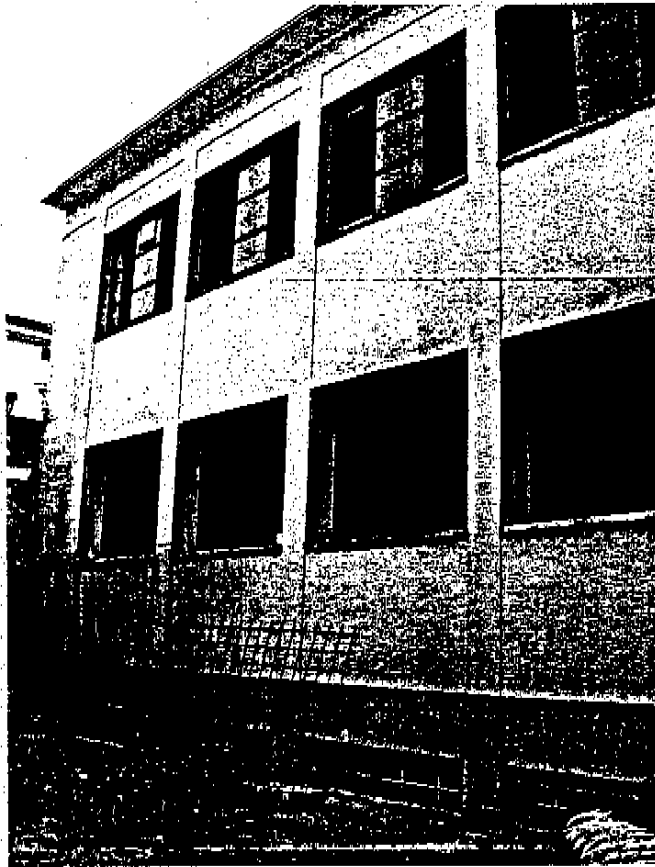


– Foto 1 –



– Foto 2 –



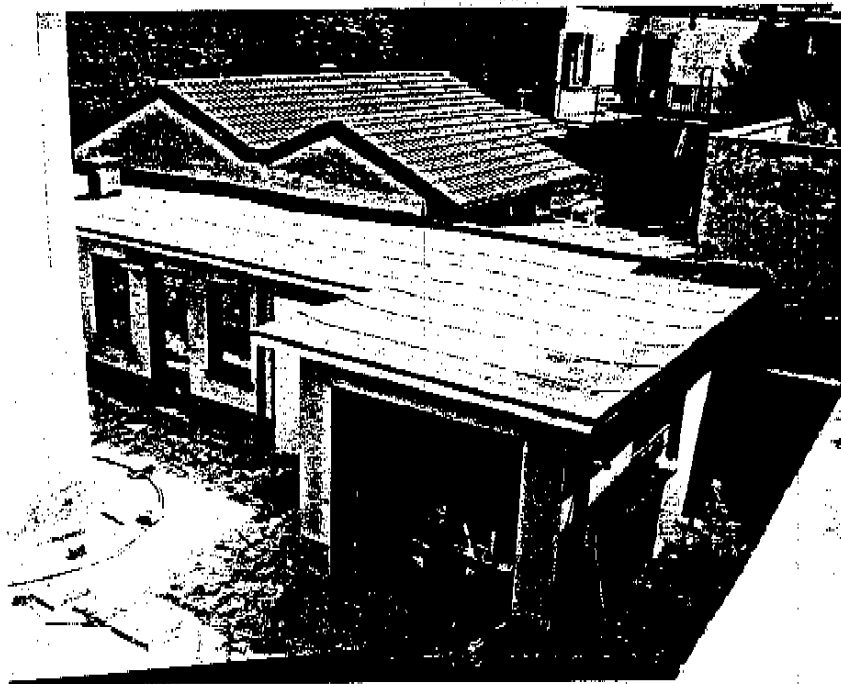


– Foto 3 –



– Foto 4 –





– Foto 5 –

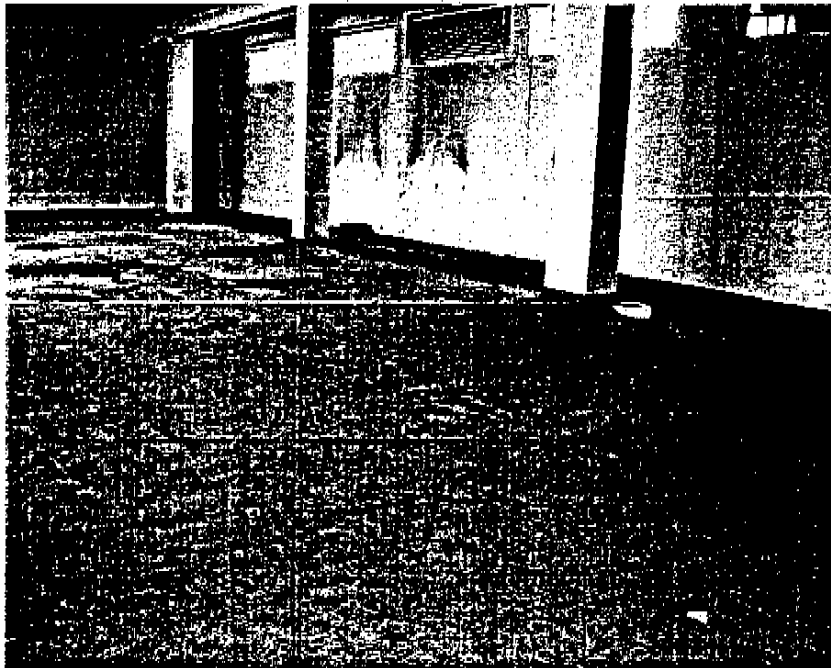


– Foto 6 –



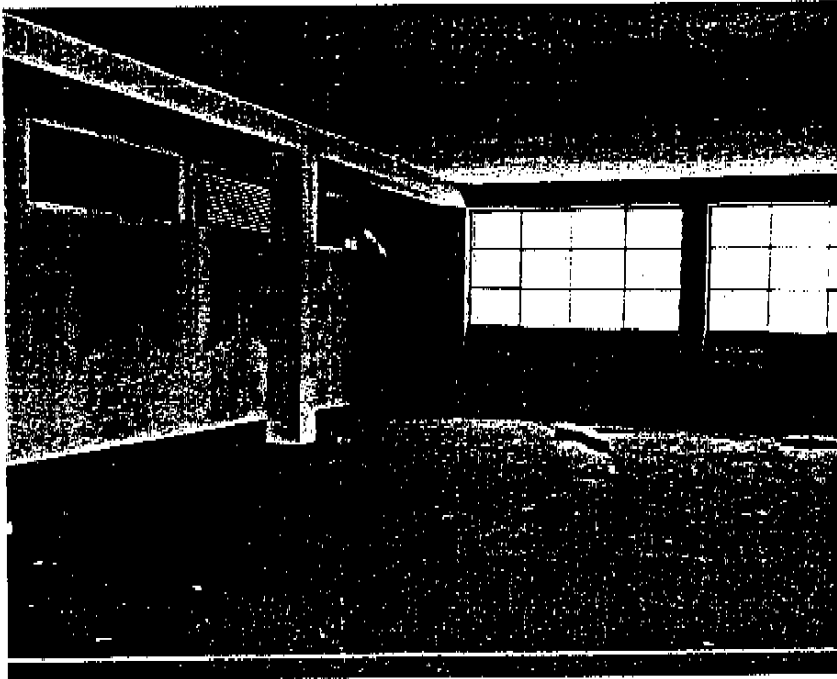


– Foto 7 –

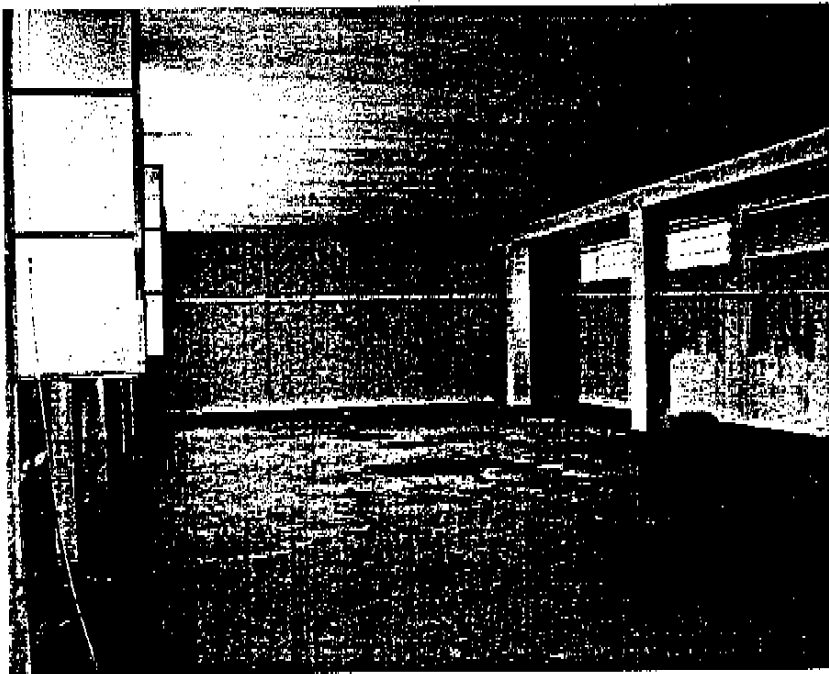


– Foto 8 –



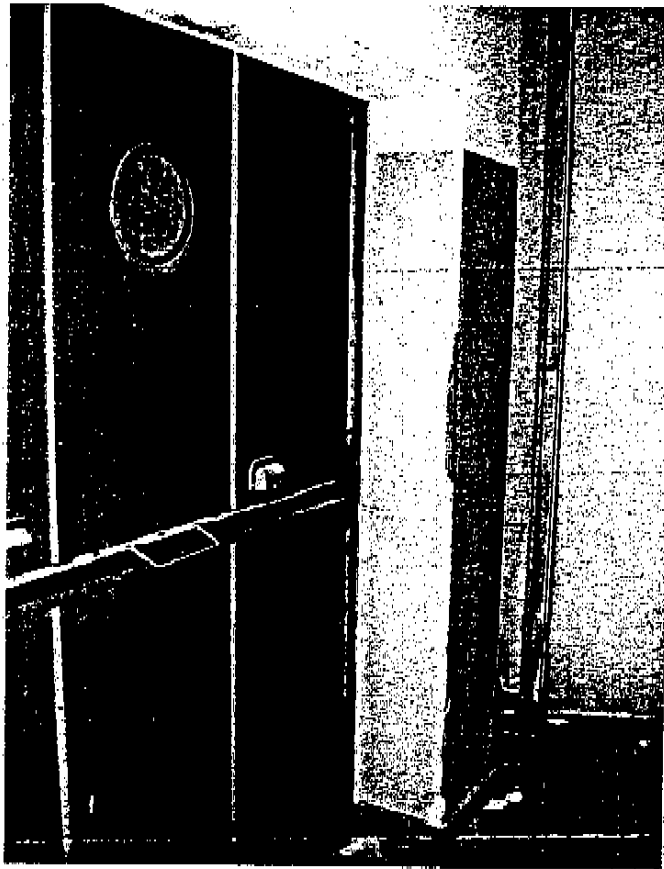


– Foto 9 –

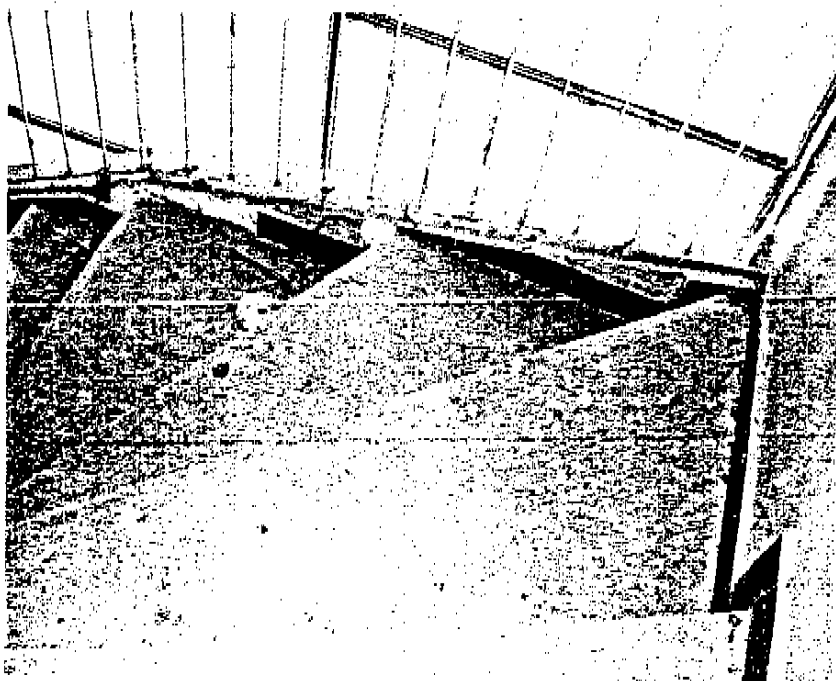


– Foto 10 –

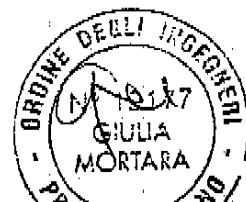




– Foto 11 –



– Foto 12 –





- Foto 13 -



- Foto 14 -





- Foto 15 -



- Foto 16 -

